

LINGONBERRY RUG

Design: Lankava Oy, Molla Mills

Finished size: 160 cm

Yarn: Lilli tube yarn (80 % recycled CO, 20 % other fibres, 1 kg = appr. 220 m) 4 kg Ecu (02), 2 kg Red (14) and 2 kg Green (11).

Hook: nr 9 (US M/13)

Multicoloured crochet in the round: Crochet dc:s (=double crochets) according to diagram and written instructions. You will work with three different tube yarns the whole time, crocheting with one and carrying the two others inside the stitches. Change colour at the end of the last dc, i.e. pull the new colour through the last 2 loops of the last dc. This way the colour will change evenly. To avoid loose loops on the back side of the rug, remember to also tighten the two other yarns by pulling slightly.

Instructions: This hexagonal rug is crocheted with dc:s as multicoloured crochet.

Row 1: Make a magic loop with ecru (= twist yarn around finger, take hook through loop, pick up yarn and pull through loop, pick up yarn on hook, pull through loop on hook), then ch 1, 18 sc, 1 slst into 1st ch. Crochet with ecru, but pick also up the other colours and crochet them inside the stitches of the row.

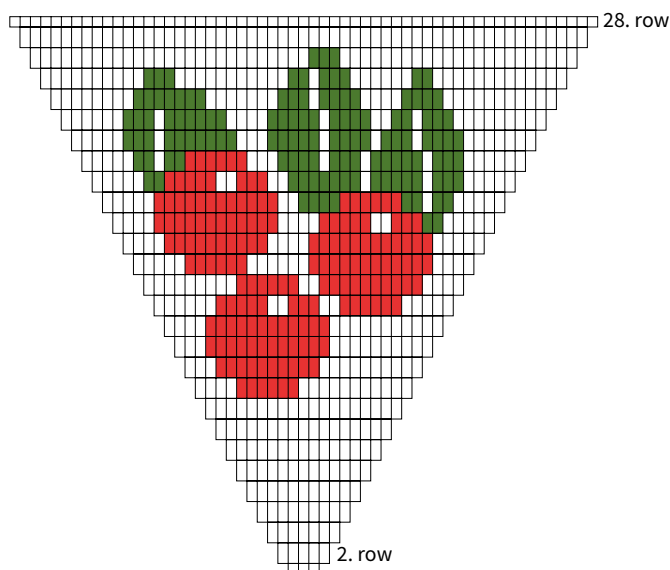
Row 2: ch 3 + 1 dc into same st, 1 dc, 2dc into same st, *ch 1, 2 dc into same st, 1 dc, 2 dc into same st* repeat *-* x4, ch 1, 1 slst into 3rd ch = 30 dc. You now have 6 clusters of dc:s separated by 1 ch.

Row 3: ch 3 + 1 dc into same st, 3 dc, 2 dc into same st, * ch 1, 2 dc into same st, 3 dc, 2 dc into same st*, repeat *-* x4, ch 1, 1 slst = 42 dc. Begin and end all rows the same way.

Rows 4-9: Continue in the same fashion so that you increase (=2 dc into the same st) at the edges of the dc-groups, 1 dc/st between increases and ch 1 between dc-groups = 54 dc, 66 dc, 78 dc, 90 dc, 102 dc and 114 dc. **Rows 10-27:** Crochet pattern according to diagram.

Row 28: Crochet sc:s with ecru and simultaneously crohet in the other colours into the row.

Cut and finish off yarns.



Any commercial use of this pattern is prohibited.