

## BEACHY BEACH RUG

US crochet terms used throughout.

Abbreviations: st(s) = stitch(es)

ch = chain

dc = double crochet

**Design:** Lankava, Molla Mills

**Finished size:** 50x95 cm

**Yarn:** Mini Tube Yarn: 800 g in Unbleached (2), 400 g in Mint (9), and for the edge lace: 120 g in Pink (29) (80% recycled cotton, 20% polyester, 1 kg = approx. 355 m)

**Hook:** 7mm (US K/L), or according to personal gauge

**Gauge:** 12 sts and 6 rows = 10 cm

**Other supplies:** 200 g of Lilli Tube Yarn in Mint (9) (80% recycled cotton, 20% polyester, 1 kg = approx. 220 m), Alice A Lucet fork (smaller size), two narrow belts

**Tapestry crochet:** The rug is worked flat, using 2 colors according to the chart. Crochet around the color not in use. At each edge, do not crochet the yarn inside the edge st, but leave it waiting, turn, and then work it again inside the 2<sup>nd</sup> st from the edge. This will make the edges neater. When you change color, make the last yarn over of the previous dc with the new color. Keep both yarns at an even tension throughout the work, and check that the yarn running inside the sts is not too loose.

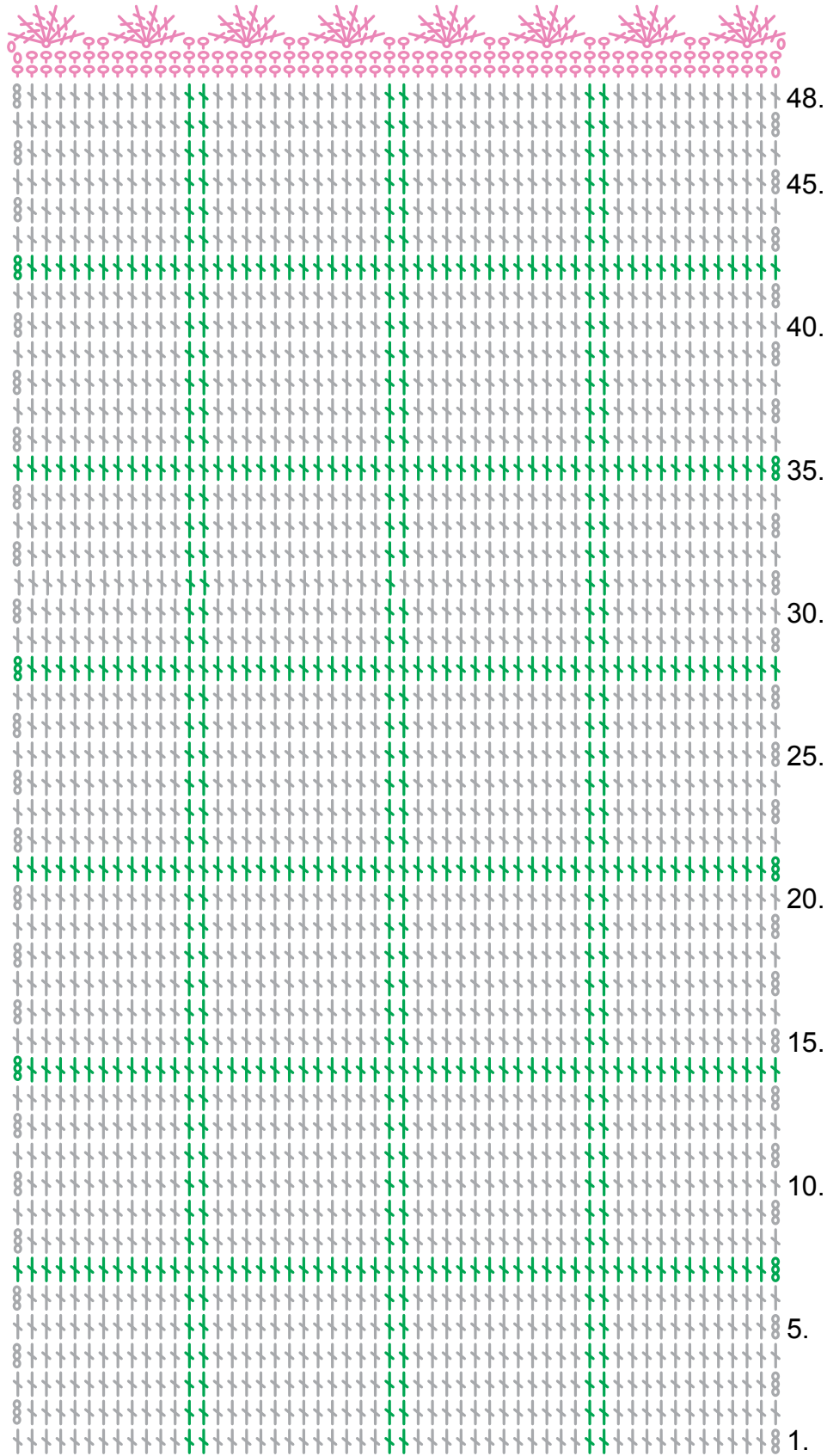
**Instructions:** Ch 56 with the Unbleached Mini.








**Row 1:** Take the Mint Mini into the work and begin tapestry crochet: dc into 4<sup>th</sup> ch from hook, dc in next 10 sts, \*dc in next 2 sts with Mint, dc in next 12 sts with Unbleached\*, repeat \*-\* 2 more times. Continue to work according to the chart and crochet 48 rows in total. Make lace edges to both ends of the rug with the Pink Mini according to the chart. Cut yarn and weave in ends.

**Strap for carrying the rug:** Make a strap with lucet cord and 2 belts. Cut the belts to 45 cm, leave the ends with the buckles attached. Make new holes to the other ends. Use the Lucet fork and Lilli to make 80 cm long cord, leave a 20 cm tail of yarn to both ends of the cord for sewing. Fold 10 cm from both ends of the cords and sew the loops attached with the tail. Take the belts through the loops. If you have leftover pieces of the belt, use them to cover the stitches (see picture). Roll the rug and attach the strap around it.



Any commercial use of this pattern is prohibited.



-  = Ch 3 in Undyed
-  = Ch 3 in Mint
-  = 1 dc in Undyed
-  = 1 dc in Mint
-  = 1 ch in Pink
-  = 1 sc in Pink
-  = 6 tr in Pink