

GEOMETRI RUG

Design: Lankava Oy, Molla Mills

Finished size: 80 x 190 cm

Yarn: Esteri Tube yarn (100% PES, 1 kg = approx. 330 m), 2 kg in black (14), 2 kg in green (173) and 1.5 kg in natural white (1).

Hook: 8 mm (US L/11), or according to personal gauge

Gauge: 9 sts and 4.5 rows = 10 x 10 cm

US crochet terms used throughout. Abbreviations: st(s) = stitch(es), ch = chain, dc = double crochet

Flat tapestry crochet: This rug is worked flat with dcs and using 3 colors. Follow the chart and crochet sts around the 2 colors not in use. Always change the color so that you make the last yarn over of the previous st with the new color. At each edge, do not crochet the yarns inside the edge st, but leave them waiting, turn, and then work them again inside the 2nd st from the edge. This will make the rug edges neater.

Instructions: Ch 70 with black for the starting chain.

Row 1 (right side): Dc in 4th st from the hook (= 1st dc), dc in next 66 sts carrying the white and green yarns inside the sts, make the last dc without the other yarns = 68 dc. Turn work and pull a bit on the yarns running inside sts, to make sure they are at the same tension as the work.

Row 2 (wrong side): Ch 3 (= 1st dc), dc in next 66 sts with carrying white and green inside the sts, dc in the last st without the other yarns and change to white by making the last yarn over with white. Turn work.

Rows 3-4: Ch 3, dc in each st with white, running the other yarns inside the sts, except for the edge sts. Change to black in the last dc for row 4.

Rows 5-8: Repeat rows 1-4.

Rows 9-72: Start the tapestry crochet and work according to the chart. Keep carrying the other two yarns inside the sts, except for the edge sts. Ch 3 for turning, as before. Make the 22-st repeat 3 times and finish with the 2 sts in the left. Make rows 9-10 from the chart, then make rows 11-26 three times, then rows 11-24 = 72 rows.

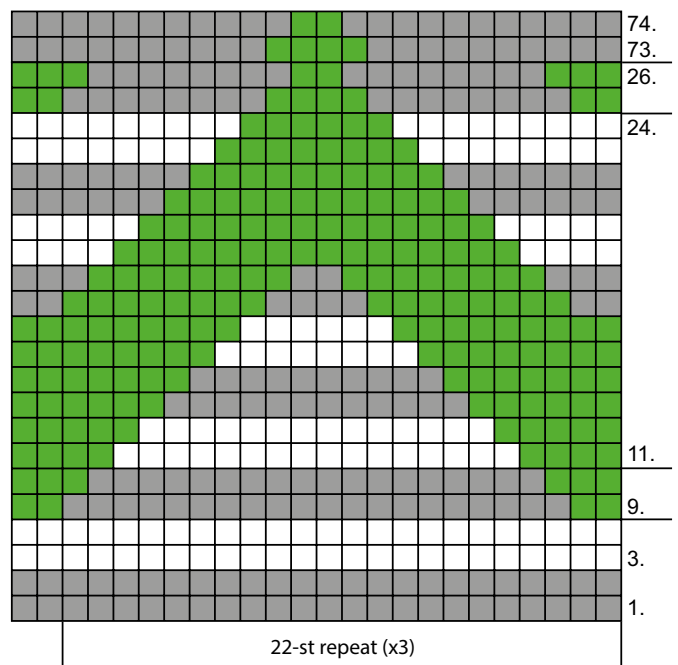
Rows 73-74: Work according to the chart.

Rows 75-82: Make the last 8 rows in a mirror image of the 1st rows of the rug: *Make rows 3-4 (in white), then rows 1-2 (in black)*, repeat *-* 1 more time.

Finishing: Melt the yarn ends to stop them from fraying. Weave in the ends and secure them with couple of stitches so the ends will stay in place in washes.



■ = 1 dc in black □ = 1 dc in white ■ = 1 dc in green



Any commercial use of this pattern is prohibited.