

BILBERRY RUG

Design: Lankava Oy, Molla Mills

Finished size: 86x220 cm

Yarn: Lilli tube yarn (80 % recycled CO, 20 % other fibres, 1 kg = appr. 220 m) 5 kg Ecu (2), 2 kg Denim blue (22), 2 kg Dark green (11).

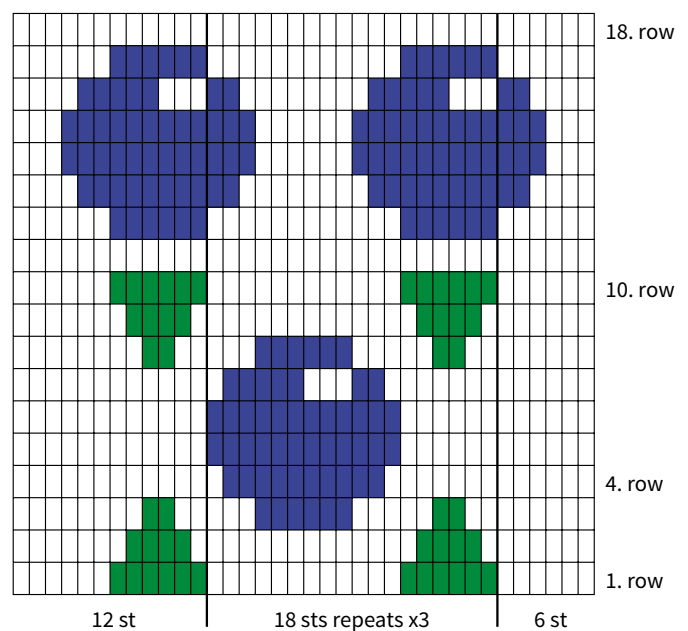
Hook: nr 9 (US M/13)

Flat multicoloured crochet: Crochet dc:s according to instructions and diagram. You are working with 3 different colours, crocheting with one and running the other two inside the stitches. Switch colours at the end of the last dc (=pull new colour through 2 last loops of dc). This way the colour change will be even. Simultaneously tighten the yarns running inside the stitches by pulling at them slightly so as to avoid looping on the backside of the rug. At the end of each row, leave the coloured yarns 1 dc from the edge and pick them up again after the first 3 ch (=1st dc) on the next row.

Instructions: Chain 74 with Ecu. Begin pattern according to diagram.

Row 1: 1 dc in 4th chain (=1st dc of row), pick up Denim blue and Dark green yarn, crochet 5 dc with Ecu and simultaneously crochet in the other colours into the stitches as you go. Switch to green at end of 5th dc, then crochet *6 dc Dark green, 12 dc Ecu*, repeat *-* 2 times, finish with 6 dc Dark green, 6 dc Ecu = 72 dc. NB: at the end of row, leave coloured yarns one dc from edge and pick them up again after the first 3 ch (=1st dc) of next row.

Row 2: ch 3 with Ecu, pick up coloured yarns and crochet them in the sts. Dc 5 with Ecu, continue according to diagram. Leave coloured yarns 1 dc from edge. Repeat rows 1-18 of diagram x3 and finish with rows 1-10 once = 64 rows. Cut and finish off yarns.



Any commercial use of this pattern is prohibited.