

SAFFRON RUG

DESIGN: Lankava, Molla Mills.

SIZE: W. 86 cm, l. 2,45 m.

YARN: Pamela Macramé Cord (80 % recycled CO, 20 % PES, 700 g = 180 m) 4,2 kg (6 rolls) burnt orange (58) 2,8 kg (4 rolls) natural white (52).

HOOK: 7 mm (or size to obtain gauge).

GAUGE: 9 sc x 8,5 rows = 10 cm.

INFO: The rug is worked back and forth in single crochet stitches, carrying the other yarn inside the stitches throughout the work. Make sure not to pull the carry-on yarn too tight, keep it loose. Leave the carry-on yarn one stitch from the end of each row to make sure the yarn loops will not show on the right side of the work. Change the color of the yarn in the last yarn over of the stitch.

When running out of yarn in the middle of the work, crochet the new yarn together with the stitches for about 20 cm, then change to the new yarn, and weave in about 20 cm of the tails.

ABBREVIATIONS:

ch = chain stitch

st = stitch

sc = single crochet stitch (Am.)

sl st = slip stitch

START: Work 77 chain stitches in orange yarn to begin, leave a 5 m long yarn tail for the slip stitch row.

Row 1. Work 1 sc in the second st from the hook, grab the natural white yarn in the work. Work 1 sc in each chain st (76 sts). Leave the natural white yarn one st from the end at the backside of the work.

Row 2. Work 1 ch, turn, grab the natural white yarn in the work. Work 1 sc in each st (76 sts). The starting chain st counts as the first st of each row.

Row 3. Work as for row 2.

Row 4. Work 1 ch, turn, work 35 sc in orange yarn, change to natural white yarn in the last yoh, work 3 sc, change back to orange yarn and work 1 sc in each st until the end of the row. Note! The flower pattern starts at the back-side of the work.

Rows 5.-69. Work 1 ch to begin each row, turn, and grab the other yarn in the work. Work the rows according to the pattern chart. One flower pattern repeat is 65 rows in height.

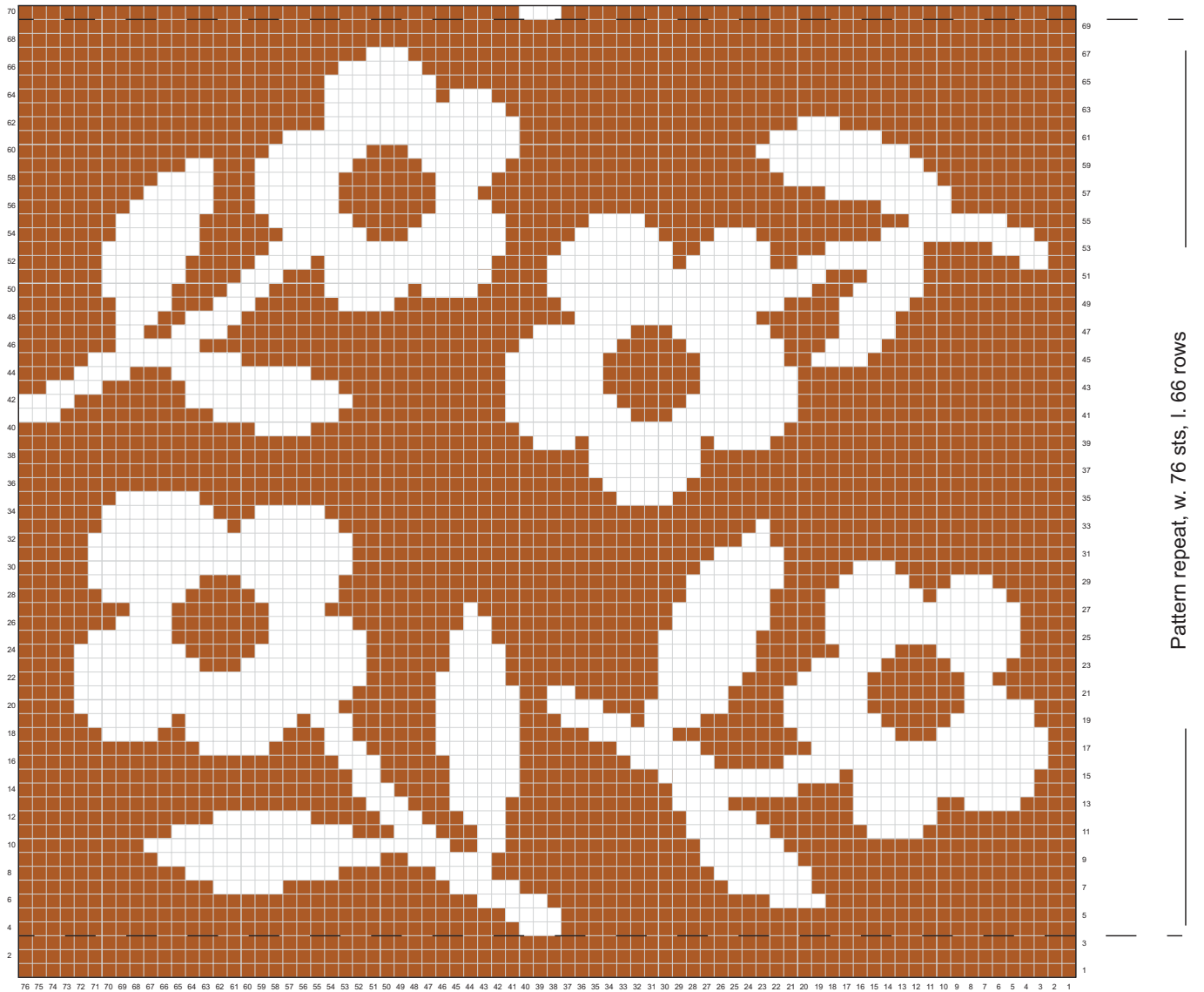
Row 70. Work as for row 4. A second flower pattern starts on this row.

Continue crocheting according to the pattern chart. The third flower pattern repeats starts at row 136.

Work altogether 202 rows. The last 3 rows are worked in orange yarn.

FINISHING: Work a slip stitch row on both short ends of the work on the right side of the work. Cut yarns and weave in ends.





- Single crochet stitch, sc (Am.), burnt orange
- Single crochet stitch, sc (Am.), natural white