

LATO BLANKET

Abbreviations:

st(s) = stitch(es)

k = knit

p = purl

RS = right side

WS = wrong side

Design Lankava, Molla Mills

Finished size 54 x 130cm or 102 x 146cm

Yarn 1.2 (2.7)kg of Lankava Naturelli Mahtava (100% wool, 220g = approx. 90m) in Natural white

Needles 8 mm (US 11) circular needle, 80-100 cm long (or size to obtain gauge)

Garner stitch Knit every row

Pattern Work flat according to the written instructions and the chart.

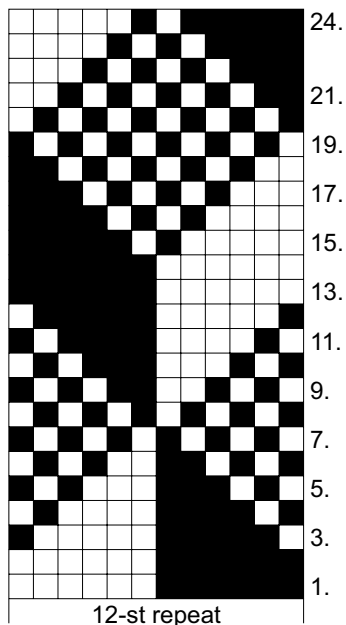
Gauge 10 sts and 15 rows = 10cm

Instructions Cast on 52 (102) sts. Work in garner st for 2 rows. Next, continue to work 3 sts in garner st at each edge and begin working the pattern between the edge sts as follows.

Row 1 (RS): K3, *p6, k6*, repeat *-* 3 (7) more times, k3.

Row 2 (WS): K3, *p6, k6*, repeat *-* 3 (7) more times, k3.

Keep working according to the chart and repeat rows 1-24 in total 8 (9) times = 192 (216) rows. Work rows 1-2 of the chart and end by working 2 rows in garner st. Cast off sts and weave in ends.



□ = k1 on RS, p1 on WS
 ■ = p1 on RS, k1 on WS

Any commercial use of this pattern is prohibited.