

MARINA RAG RUG

Design: Lankava Oy, Mia Lehtiniemi

Finished size: 73x190 cm

Weave structure: summer & winter with inlay pattern

Warp/meter: 230 g of Mop Yarn in Dark grey (80% recycled cotton, 20% other fibers, tex 1400, 1 kg = approx. 700m), 30 g of Terylene Rug Warp in Beige (2), (100% polyester, tex 110x3)

width: 80,3 cm

threads/cm: 3

reed: 20/1,2

total threads: 241+2

Making the warp: Begin with 2 threads in the Terylene Rug Warp. Then repeat the following pattern 80 times: 2 threads in Mop yarn, 1 thread in Terylene. (Or, make the warp with yarns running simultaneously from three cones: 2 cones of Mop yarn and 1 cone Terylene). After 80 repeats, add 1 more thread in Terylene.

Base weft: 1.3 kg of Eko Tube Yarn in Grey (17), (80% recycled cotton, 20% other fibers)

Pattern weft: Aino Rag Rug Yarn: 770 g in White, and 550 g in Blue shades (25 mm wide weft cut from recycled cotton sheets)

Weft threads/cm: 3

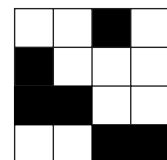
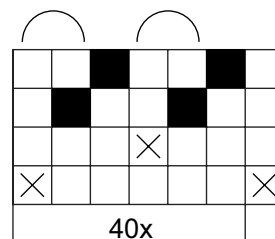
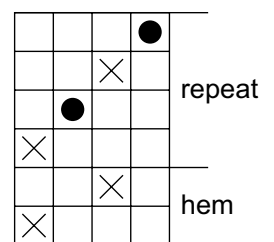
Threading and sleying: Strengthen the outermost threads by putting 2 Terylene warp threads in the first and last heddle, on the foremost (4th) shaft. Put the pairs in the same dent as you sley the reed. Otherwise, sley as follows: 1 thread Mop yarn in one dent, 1 thread Mop yarn and 1 thread terylene in the next dent.

Weaving: Weave the left side of the rug in white and the right side striping with the blue shades. Begin and end the rug by weaving 1.5 cm with terylene and 5 cm with Mop yarn, then 4 shots terylene (= the last fold) to make a double fold hem. Start weaving the repeat shown in the treadling picture with 3 shuttles (=2 shuttles pattern weft and 1 shuttle base weft). Always start the shuttles with pattern weft from the opposite sides: start the white pattern weft from left to right, go under 6 warp threads on the rise, skip 2 rising warp threads. Then start the blue pattern weft from right to left, still in the same shed. Change treadle, make 1 shot with the base weft. As you return with the pattern wefts towards the edges, make sure you always keep 2 warp threads between the areas made with the pattern wefts. With the next shot made with the pattern wefts starting from the edges, move 1 thread right with each pattern weft, again leaving 2 rising warp threads between.



Continue to work like this until there are 6 rising warp yarns left on the right side, do 4 more shots without moving the pattern wefts to right (= tip of the triangle). Then start to mirror the pattern into the beginning (= 1 triangle). Weave until the rug has 3 white triangles. End weaving the pattern when there are 6 warp threads on the rise at the left side.

Finishing: Use overhand knots to tie 2 warp yarns together. Cut the fringes short. Fold the double fold for the hem and sew it by hand from the wrong side. Steam the finished rug from the wrong side.



Legend for the threading

■ = Mop yarn
 ⊗ = Terylene rug warp

Legend for the treadling

⊗ = Eko
 ● = Aino

Any commercial use of this pattern is prohibited.