

ALMADA RUG

US crochet terms used throughout.

Abbreviations: st(s) = stitch(es),

sl st = slip stitch,

ch = chain,

sc = single crochet,

dc = double crochet

Design: Lankava, Molla Mills

Finished size: 92x192 cm

Yarn: Lilli Tube Yarn: 4 kg in Undyed (2) and 4 kg in Coral red (12) (80% recycled cotton, 20% polyester, 1 kg = approx. 220 m)

Crochet hook: 7 mm and 8 mm (US K and L), or according to personal gauge

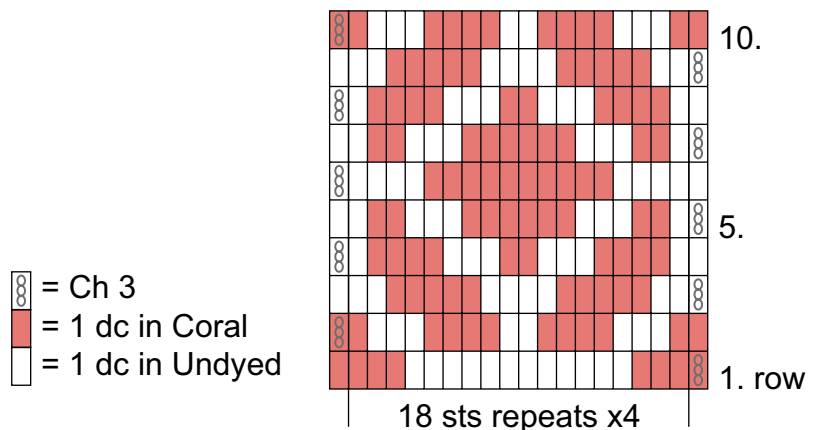
Gauge: 8 dcs and 4 rows = 10 cm

Tapestry crochet: The rug is worked flat, using 2 colors according to the chart. Crochet around the color not in use so that it runs inside the sts, except at each edge, do not crochet the yarn inside the edge st, but leave it waiting, turn, and then work it again inside the 2nd st from the edge. When you change color, make the last yarn over of the previous dc with the new color. Keep both yarns at an even tension throughout the work, and check that the yarn running inside the sts is not too loose.

Instructions: With the larger hook, chain 76 in Coral red for the foundation chain. Begin tapestry crochet on next row.

Row 1 (right side): Take Undyed yarn also into work and make 1 dc in 4th ch from hook, dc in next 3 sts in Coral red (while crocheting around the Undyed yarn), change into Undyed at the end the 3rd dc, dc in next 12 sts in Undyed, dc in next 3 sts in Coral red, *dc in next 3 sts in Coral red, dc in next 12 sts in Undyed, dc in next 3 sts in Coral red*, repeat *-* 2 more times, dc in next st in Coral but do not crochet the Undyed yarn inside this edge st. Ch 3 for turning, turn work, and keep the Undyed yarn at the wrong side of the work. Remember not to crochet the yarn not in use inside the edge st and keep the yarn not in use at the back of the work when working on the right side, and at the front of the work when working on the wrong side. Keep working in tapestry crochet according to the chart: Repeat rows 1-10 in total 8 times. Make row 1 to finish off the work. Cut yarns. Crochet into both ends of the rug with Coral as follows: From the right side and with the smaller hook, make a sc in each st of the last row, turn work, make a sl st in each sc. Cut yarn. Work from the right side into the beginning row of the rug: make a sl st into each ch, turn work, make a sl st into the upper loop of each sl st.

Finishing: Weave in ends inside the sts.



Any commercial use of this pattern is prohibited.