

AINO FLOOR CUSHION

Design: Lankava, Marja Rautiainen

Finished size: 66x66 cm

Weave structure: plain weave and weft-faced pattern

Warp/ meter: 90 g of Molla Cotton Twine, 12-ply, in Melon (61) (tex 12x30, 100% cotton, 500 g/roll).

- width: 75.7 cm
- threads/cm: 3
- reed: 30/1 or 60/1,0
- total threads: 227+2

Base weft/ 1 cushion: 1 kg of Aino Rag Rug Yarn in Red shades (5) (100% cotton, width: 25 mm, 1-2 kg/ package).

Pattern weft/ 1 cushion: 70 g of Eko Tube Yarn in Brilliant blue (23) (80% recycled cotton, 20% polyester, 1 kg = approx. 270 m).

Other supplies: 70x70 cm inner cushion, 60 cm zipper, and a needle.

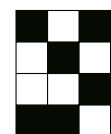
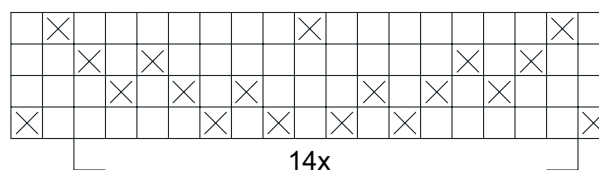
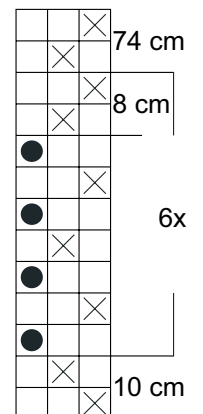
Weft threads/cm: 3

Instructions: Begin and end by weaving 1 cm with the warp yarn. Weave for 145 cm using either one or two shuttles, according to the treadling. Note: Do not bind the pattern weft with the base weft all the way until the edges but always leave the pattern weft two warp threads away from each edge.

Finishing: Make fringes with 2-thread overhand knots. Cut the fringes short. Fold the work in half, right sides facing. Use a sewing machine and a straight stitch to sew both edges. Sew also 3 cm from each end of the bottom opening. Turn work so the right side faces you. Sew the zipper by hand using the warp yarn into the remaining opening.



☒ = base weft
● = pattern weft



Any commercial use of this pattern is prohibited.