

## WAVY CAMERA STRAP

US crochet terms used throughout.

Abbreviations: st(s) = stitch(es)

ch = chain

dc = double crochet

**Design:** Lankava, Molla Mills

**Finished size:** 5x80 cm

**Yarn:** Liina Cotton Twine, 6-ply: 20 g in Undyed (01), and 20 g in Black (80) (100% cotton, 500 g/roll)

**Hook:** 1.25 mm

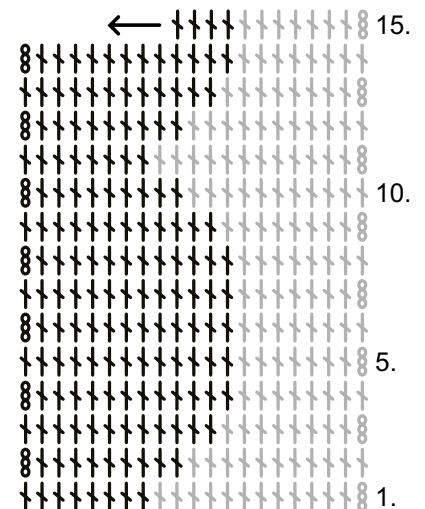
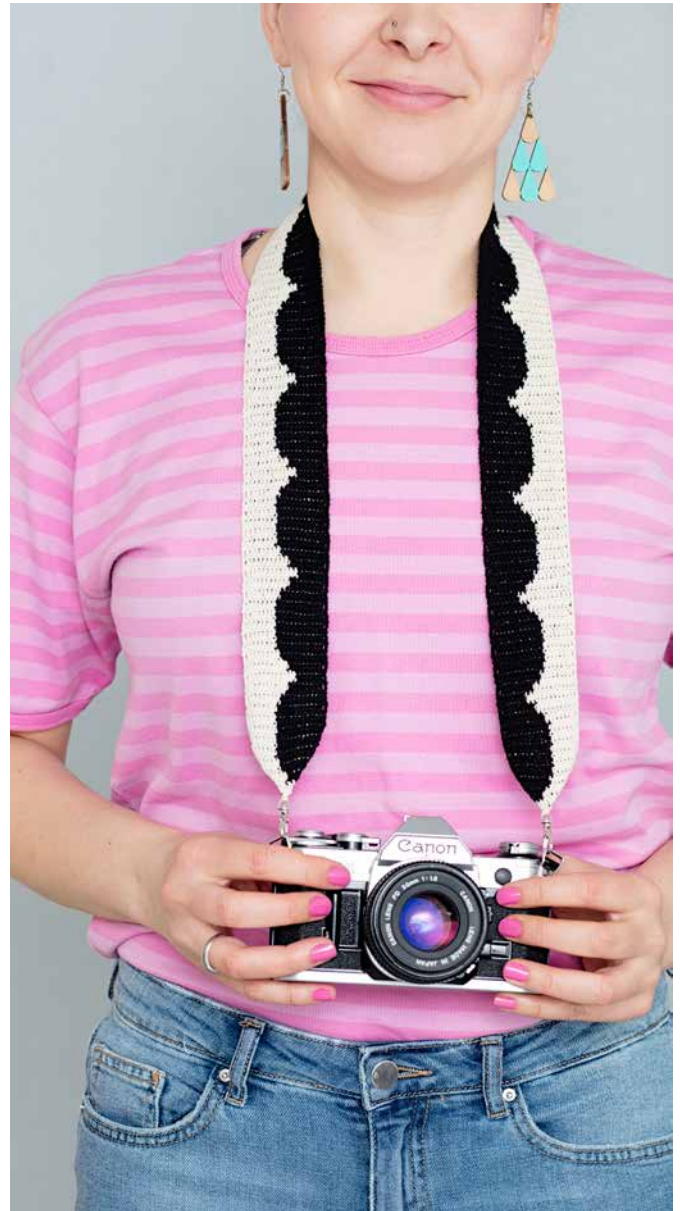
**Gauge:** 18 rows = 10 cm

**Other supplies:** Ø 18 mm key rings and small swivel clasps: 2 pieces each

**Tapestry crochet:** The strap is worked flat, using 2 colors according to the chart. Crochet around the color not in use. At each edge, do not crochet the yarn inside the edge st, but leave it waiting, turn, and then work it again inside the 2<sup>nd</sup> st from the edge. This will make the edges neater. When you change color, make the last yarn over of the previous dc with the new color. Keep both yarns at an even tension throughout the work, and check that the yarn running inside the sts is not too loose.

**Instructions:** Ch 23 with the Undyed Liina. Row 1: Take the Black Liina into the work, dc into the 4<sup>th</sup> chain from hook, dc in next 11 sts (carrying the black yarn inside the sts), change to the black yarn and make dc in next 8 sts, ch 3 for turning. Continue to work according to the chart: repeat rows 1-10 in total 15 times. End with row 1 = 151 rows. Cut yarn and weave in ends.

**Finishing:** Sew the clasps into the middles of the strap ends using a strong thread. Fold and sew the ends into a triangle shape. Attach the key rings onto the camera and attach the strap into the rings with the clasps.



**Chart legend:**

⊗ = Ch 3

┆ = 1 dc in Undyed

┆⊗ = 1 dc in Black