

"BIRCH BARK" WOVEN RYA RUG

Design: Lankava Oy, Mia Lehtiniemi ja Marja Rautiainen

Finished size: 29x50 cm

Weave structure: cross twill

Warp/meter: 15-ply Liina cotton twine tex 30x15 (100 % CO, 500 g/roll or 1,8 kg/cone) 50 g Black

- width: 33 cm
- threads/cm: 3
- reed: 30/1
- total threads: 99+4

Main weft: Muhku yarn tex 850x3 (100 % WO, 1 kg = appr. 390 m) 100 g White (17)

Pile yarn: Lettlopi yarn (100 % WO, 50 g = appr. 100 m) 50 g Grey (0057), 50 g Pine green (1407) Alafosslopi yarn (100 % WO, 100 g = appr. 100 m) 100 g White (0051), 100 g Black (0059) and 100 g Light beige (0086)

Alize Lanagold yarn (49 % wool, 51 % acrylic, 100 g = appr. 240 m) 100 g Light grey melange (DUE651), 100 g Black/grey (DUE600) and Black (60)

Alize Angoragold yarn (80 % acrylic, 10 % mohair, 10 % wool, 100 g = appr. 550 m) 100 g Grey melange (700)

Alize Alpaca Royal yarn (55 % PAN, 30 % WP, 15 % WO, 100 g = appr. 250 m) 100 g Grey melange (196)

Alli sock yarn (75 % WO, 25 % PA, 100 g = appr. 200 m) 100 g White (1001) and Green (9645)

Bockens lace making yarn Nel 35/2 (100 % LI, 12,5 g/roll) 25 g half bleached and 12,5 g Black (522)

Weft threads/cm: 2,5

Other supplies: 29 cm hollow aluminium tubing (diameter 0,8-10 mm) and appr. 65 cm of white twine

Instructions: Strengthen the outermost 2 warp threads and leave the uttermost of them unthreaded. For inner seam allowance, weave 2 cm with single and for outer seam allowance 6 cm with double Green Alli yarn. Follow with 4 threads of plain weave with the main weft. Cut the pile threads as follows:

Combine 5 threads into a bunch and cut to a length of 50 cm: 1 Pine green (1407) Lettlopi, 1 Black (0059) Alafosslopi, 1 Black (60) Lanagold, 1 Grey melange (700) and 1 Black lace yarn. Starting from the edges, make 17 piles per row. Bind the pile thread bunches into 4 warp threads (2+2 threads) at both ends, otherwise onto 6 warp threads (3+3 thr). At the middle, bind 1 pile onto 7 warp threads (3+4 thr), because the number of warps is uneven. Throw 6 warp threads between pile rows, but only 2 threads between the last rows. NB: The pile ends do not need to be exactly even.

Pile row 2: Lettlopi 1407, Lanagold 600, Angoragold 700, Alpaca Royal 196 and a black lace yarn thread. Pile length appr 45 cm.

Pile row 3: combine 6 threads: Lettlopi 0057, Lanagold 600, Angoragold 700, Alpaca Royal 196, a black and a bleached lace yarn thread. Pile length appr. 45 cm.

Pile row 4: Lettlopi 0057, Lanagold 651, Anagoragold 700, Alpaca Royal 196 and a bleached lace yarn thread. Pile length appr. 45 cm

Pile row 5: Alafosslopi 086, Lanagold 651, Angoragold 700, Alpaca Royal 196 and a bleached lace yarn thread. Pile length appr. 45 cm.

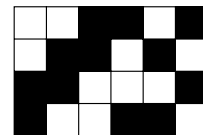
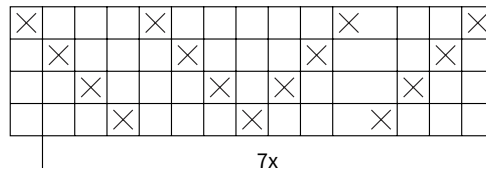
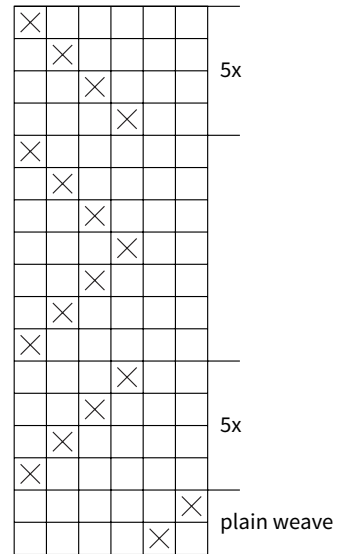


Any commercial use of this pattern is prohibited.

Pile row 6: Alafosslopi 0086, Lanagold 651, Angoragold 700, 0051 and a bleached lace yarn thread. Pile length appr. 35 cm. Weave 2 threads plain weave with the main weft.

Pile row 7: Alafosslopi 0086, Angoragold 700, 0051, Alli 1001 and a bleached lace yarn thread. Pile length appr. 25 cm. Then, weave the upper part of the rya with Muhku, repeating the twill pattern and weave the turn allowance at the end: 7 cm with double and 2 cm with single Alli.

Finishing: Tie 2-thread overband knots at the ends of the rya and shorten the fringe. Sew a 3 cm hem to the upper end of the rya and a 3,5 cm hem with 2 cm turn allowance to the bottom. Saw a piece of the aluminium tubing as long as the width of the upper hem and thread it into the hem. Thread the twine through the tubing, tie the ends and pull the knot into the tubing. Hang the rya and moisten the pile gently with a spray bottle. Let dry and even out pile rows from the bottom as follows: 22 cm, 22 cm, 22 cm, 22 cm, 20 cm, 17 cm, 11 cm.



Any commercial use of this pattern is prohibited.