

CORONA BLANKET

Design: Lankava Oy, Marja Rautiainen

Finished size: 120x180 cm

Weave structure: combined plain weave and basket weave

Warp/meter: Esito plaid yarn tex 143x3 (100 % WO, 240 g = appr. 550 m) 160 g White (7001), 110 g Grey (7092) and 60 g Black (7999)

- width 130,4 cm
- threads/cm: 5
- reed 50/1
- total threads 652+2

Warp pattern:

1 thread Black
 4 thr Black
 4 thr White
 4 thr Grey
 4 thr White
 4 thr Grey
 4 thr White
 5 thr Black

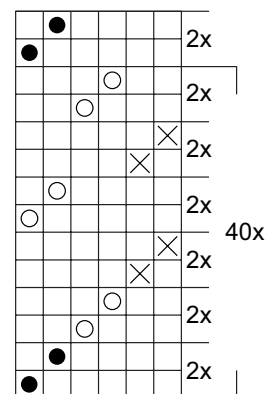
} 27x

Weft: Esito plaid yarn tex 143x3, 300 g White (7001), 200 g Grey (7092) and 100 g Black (7999)
Weft threads/cm: 5

Instructions: Strengthen the outermost warp threads and leave the uttermost of them unthreaded. Always throw the shuttle over the uttermost warp thread and receive from below. Weave the 192 cm blanket according to the treadling pattern. Do not cut the weft threads when changing colours but leave a four weft wide overskip to the edges. After four throws, always bind the Grey weft to the uttermost warp thread by taking the shuttle between the unthreaded warp threads.

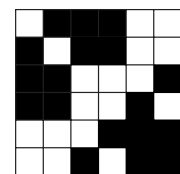
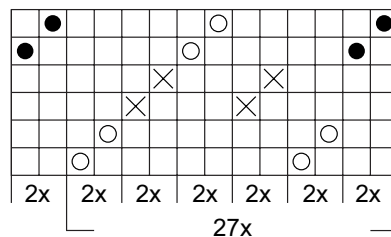
Finishing: Weave 8+8 thread twisted fringes to the ends of the blanket.

Washing and caring: Air the blanket regularly. Hand wash in plenty of water with wool detergent. Rinse thoroughly. Use fabric softener. Squeeze gently out excess water, fold the blanket in half widthwise and shape to dry on an airy flat surface or on towels. Finish drying on a rounded beam. Steam iron lightly on a wool setting.



Rakenteen merkit

- = Black
- = White
- X = Grey



Any commercial use of this pattern is prohibited.