

CLOUDBERRIES RYA RUG

Design: Lankava Oy, Molla Mills

Finished size: 48x48 cm

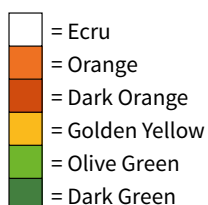
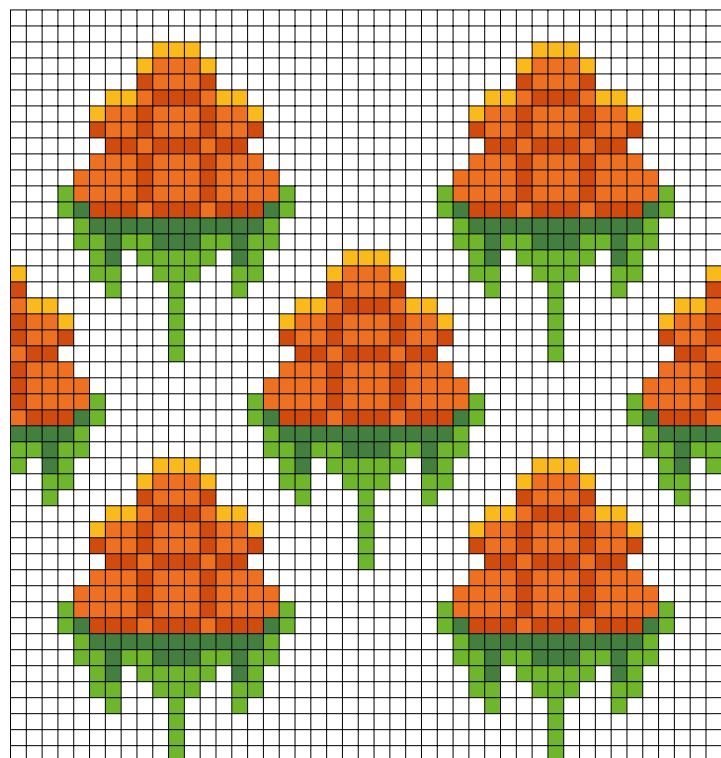
Yarn: Esito plaid yarn (100 % WO, 240 g = appr. 550 m) 960 g Ecrú (7000), 240 g Orange (7025), 240 g Dark orange (7027), 240 g Golden yellow (7030), 240 g Olive green (7042) and 240 g dark green (7044).

Other supplies: white (01) Stafil backing net, crochet hook, sturdy sewing thread

Instructions: Tie the rya yarn to the backing with the help of a crochet hook according to diagram, creating the pile of the rya rug. Cut a piece of backing 55 x 57 squares in size. Fold 5 sqs from each side to the wrong side, tidy the corners by cutting off extra backing (= 45 x 47 sqs) and fasten folds with sturdy sewing thread.

Cut rya threads as follows: Wind a ball of each colour, put the ends of the yarns together and cut bunches of appr. 15 cm in length. Tie these bunches to each sq of the backing with a rya knot. Begin from bottom of backing using the crochet hook as follows: Take a yarn bunch, fold it in half, put the hook through the backing under the bottom edge of the square, pull threads through. Both the open ends and the loop end on the hook are now on the right side of the backing. Thread the ends through the loop and tighten the knot into the backing. Do not stretch the plastic backing! When you have made a row, even the pile to a length of 3 cm.

Finishing: Gently brush the rya rug pile with a soft brush. Sew a thin felt sheet to the back side of the rug. Sew a durable hanging loop to the back appr. 3 cm from the upper corners.



Any commercial use of this pattern is prohibited.