

## RENTO HAND TOWELS

**Design:** Lankava, Jennika Luhtaluoto.

**Size:** Approx. 45x72 cm (4 pieces).

**Structure:** Mock leno.

**Warp/m:** Bockens Line linen Nel 16/2 (100% linen; tex 103x2, 1 kg = approx. 4900 m) 110 g 1/2-bleached (0002).

- width in the reed: 52,2 cm
- sett: plain weave 10 ends per cm, mock leno 5 ends per cm
- reed: 50-dent reed; 2 per dent in plain weave, 3-0-0 per dent in mock leno
- 471 ends total (= wind 4 ends at a time, repeat 117 times + additional 3 ends)

**Tabby weft/towel:** Bockens Line linen Nel 16/2, 70 g 1/2-bleached (0002).

**Pattern weft:** Lankava Minimop Cotton Twine (80 % recycled cotton, 20 % polyester, tex 1400, 0,7 kg = 490 m) 70 g Yellow (57), 70 g Mint Green (59) and 70 g Turquoise (76).

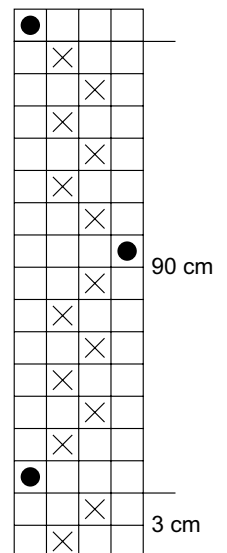
**Sett:** 7 picks per cm (6 linen and 1 Minimop), 8 picks per cm for hems.

**Warp the loom:** Wind the warp 4 ends at a time and thread following the draft. Sley the reed in the following order:

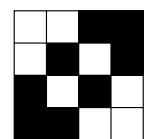
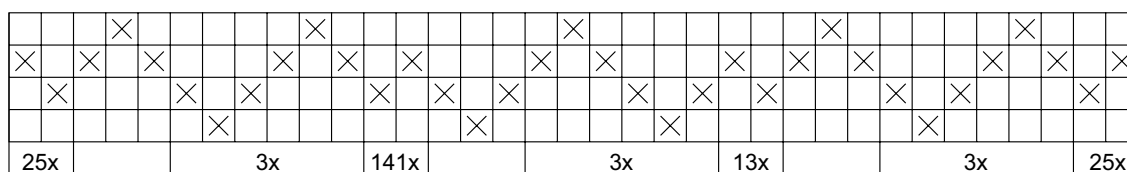
- 50 ends plain weave: 2 ends per dent = 5 cm,
- 21 ends mock leno: \*3 ends per dent, skip two dents\*, repeat \*-\* 6 times and sley 3 ends per dent to balance (3-0-0) = 3,8 cm,
- 26 ends plain weave (as previously) = 2,6 cm,
- 21 ends mock leno (as previously) = 3,8 cm,
- 282 ends plain weave = 28,2 cm,
- 21 ends mock leno = 3,8 cm,
- 50 ends plain weave = 5 cm.

**Weaving:** Weave 3 cm for the hem allowances at the beginning and end of the piece with the warp thread. Use two shuttles and weave 90 cm following the treadling draft.

**Finishing:** Finish the raw edges of the towels. Steam the pieces. Sew 1 cm wide two-fold hems with 1 cm inner hem allowance to both ends of the towels. Use straight stitch. Wet-finish in a washing machine separated from the other laundry using a 40°C delicate wash cycle.



⊗ = linen yarn  
● = Minimop



Any commercial use of this pattern is prohibited.