

BASKET WEAVE POCKET SCARF

Design: Lankava, Marja Rautiainen

Size: 55x188 cm

Structure: Broken twill with color and weave

Warp per m: Lankava Villava Wool Yarn 2-Ply (100% Finnish wool, tex 180x2, 100 g=270 m) 55 g Natural White (1) and 55 g Beige (2).

- Width in the reed: 62,5 cm
- Sett: 4 ends per cm
- 1 per dent in a 40-dent reed
- 250 ends total

Winding Instructions: Wind the warp by holding 4 threads together in your hand but separated by your fingers. Two threads in your hand are beige and two are white. Wind 248 ends (62 portees). Wind two more ends of beige for a total of 250 ends. Thread the loom following the color order.

Weft per scarf: Lankava Villava Wool Yarn 2-Ply 110 g Natural White (1) and 110 g Beige (2).

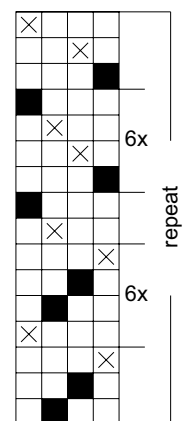
Sett: 4 picks per cm.

Other supplies: Crochet hook size 3 mm and natural white sewing thread

Instructions: Weave the scarf using two shuttles. Start by throwing the first shuttle with beige weft from left to right. Weave the second pick from right to left using the same shuttle. Weave the next two picks in the same way but use the other shuttle with white weft. Short floats will be formed on the left selvedge where the weft changes.

Make sure that the wefts are interlacing each other in the same way every time the color changes. Repeat the treadling sequence 15 times and weave additional 28 picks (=7 cm) following the beginning of the treadling draft to balance (= 217 cm total). The length of the scarf is suitable for a person 150-165 cm tall. Estimate the desired length of the scarf and repeat the treadling sequence accordingly. Leave 15 cm of unwoven warp at the end of the scarf for the fringes and begin to weave the pocket pieces. First, weave a 1,5 cm inner allowance with thin wool yarn at the beginning and end of the piece. Repeat then the treadling draft sequence two times. The piece is enough for two pockets. The selvages will be used as pocket openings.

Finishing: Finish the raw edges of the pocket piece two times with three-step zigzag stitch. Cut the pieces apart between the tips of the fringes and the pocket piece. Prepare a twisted fringe with 2+2 ends in each fringe. Trim the fringe. Cut the pocket piece in the middle in the direction of the warp. Finish the cut edges so that 4 whole blocks remain on both sides of the piece. Leave 12 threads from the half patterns at the cut edges as the bottom edges of the pockets. Steam and baste 1,5 cm from the side and bottom edges of the pockets to the back side. Crochet a border to the folded edges of the pockets with white thread in the following way: Insert a hook to the corner of the selvedge and the long side. Make a ch + sc to the same stitch, *ch, sk 3 threads, 1 sc*, repeat from * until you have reached the corner. 3 sc to the corner. Crochet the bottom edge, second corner and the other long edge the same way. Pin and baste the pockets to the middle of the ends of the scarf with a sewing thread. Sew the pockets by alternating the straight stitch between the scarf and the back loop of the single crochet stitches. End the stitch.



■ = beige
 ⊗ = natural white

