

## SHINGLE SAUNA TEXTILES

**Design:** Lankava, Marja Rautiainen

**Execution:** Karkelo/Katja Hynninen

**Finished size:** bench cover 43x150 cm, hand towel 43x70 cm, sauna pillow 43x23 cm

**Weave structure:** a variation of twill

**Warp/meter:** 110 g of Bockens Tow Linen 6 in Undyed (0000) (100% linen, tex 280, 250 g = approx. 1,050 m)

**width:** 44 cm

**threads/cm:** 8

**reed:** 40/2

**total threads:** 354

**Weft:** Weave with 2 threads of Bockens Tow Linen 6 in ½-bleached (0002) OR Black (522). Usage: bench cover: 350 g, hand towel: 170 g, pillow: 100 g.

**Weft threads/cm:** 5, except for the inside of the hem: 10

**Other supplies:** 140 cm of cotton ribbon in black and unbleached

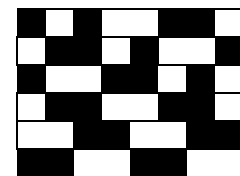
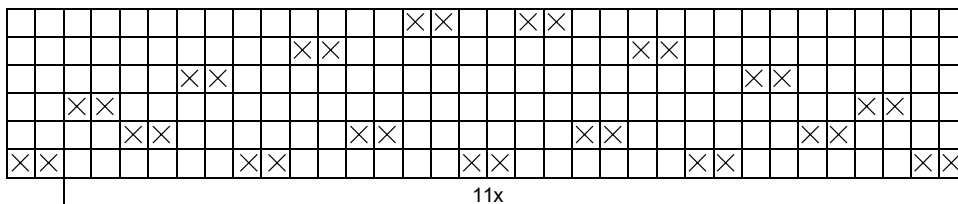
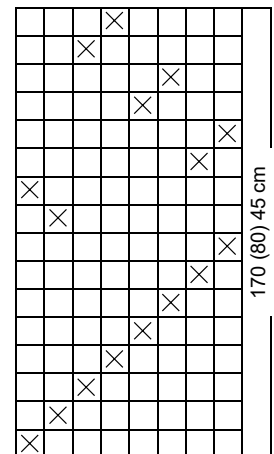
**Instructions:** Leave the outermost 2 warp threads unthreaded (= a floating selvedge). Enter the shed over the floating threads and exit under them. Start and end each piece by weaving 8 shots with a single yarn to make the inside of the hem. Otherwise, use a double shuttle to weave 2 weft threads together. Weave 170 cm for the bench cover, 80 cm for the hand towel, and 45 cm for the pillow, according to the pattern repeat shown in the treading picture. Mark the change of a piece by making 1 shot with a contrasting thread.

**Finishing:** Zig zag the raw edges. Cut 2 x 10 cm piece of the cotton ribbon for the towels, and 4 x 25 cm piece for the pillow. Use a steam iron to make 1.5 cm folds to the raw edges of the bench cover and towel. Sew the hems with a straight machine stitch.

**Hand towel:** Pin the piece of ribbon to the middle of the towel under the hem to make a hanging loop. Sew the hem.

**Sauna pillow:** Fold the fabric in half and sew together the zig zagged edges and one of the selvedge edges, with a 1 cm seam allowance. The other end of the pillow stays open. Sew the 4 pieces of ribbon onto the open end. Fold and sew the ribbon ends.

**Note:** The fabric will shrink approx. 10% of its width and 5% of its length.



Any commercial use of this pattern is prohibited.