

FROST SCARF

Design: Lankava Oy, Marja Rautiainen

Finished size: approx. 38x210 cm

Weave structure: broken twill

Warp/meter: 40 g of Alize Angora Gold Simli Batik yarn in stranded grey & white (1900). (75% acrylic, 10% wool, 10% mohair, 5% glitter; 100 g = approx. 500 m)

width: 42.2 cm

threads/cm: 4

reed: 40/1

total threads: 169

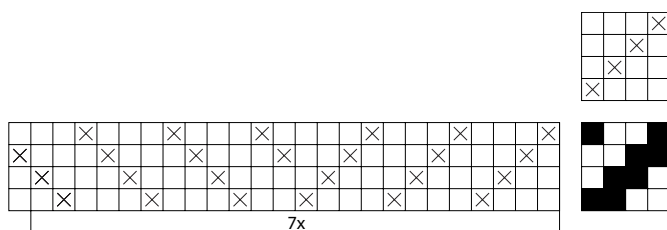
Weft/1 scarf: 80 g of Alize Angora Gold Simli Batik yarn in stranded grey & white (1900). (75% acrylic, 10% wool, 10% mohair, 5% glitter; 100 g = approx. 500 m)

Weft threads/cm: 4

Instructions: Weave for 215 cm, repeating the 4-treadle pattern as shown in the treadling picture.

Note: Always start the shuttle from the left on the first treadle to make a neater selvedge.

Finishing: Make approx. 8-10 cm long twisted fringes to both ends, using 4 + 4 threads for each fringe. Cut the ends to even length.



Any commercial use of this pattern is prohibited.